



GALERIE KASHYA HILDEBRAND Talstrasse 58, 8001 | Zurich, Switzerland | www.kashyahildebrand.org

prana
THE LIFE WITHIN
RECENT WORKS BY NOBINA GUPTA



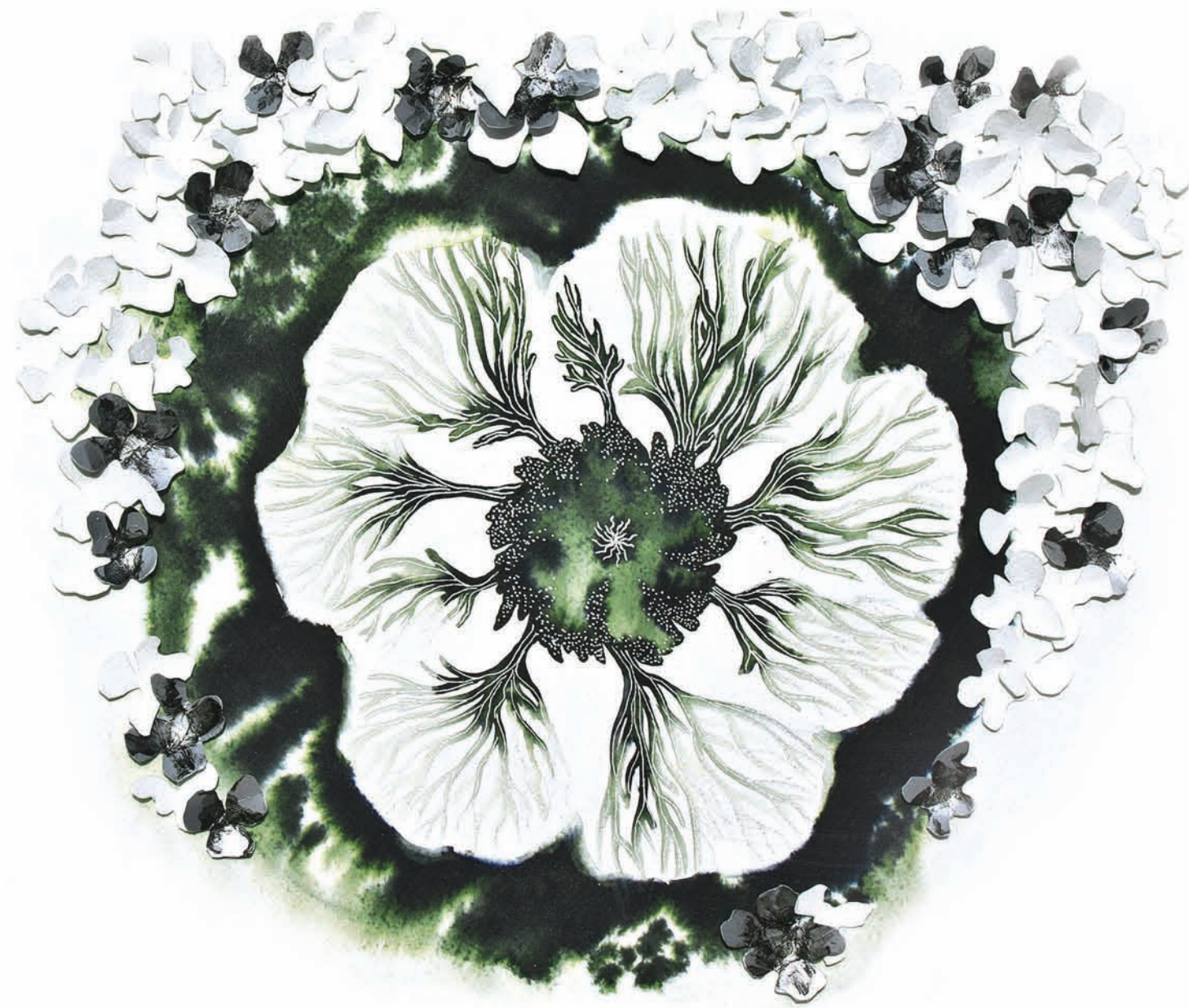
Cover | *Orgiastic Replenishment* | Ink on Paper Construction | 71 x 74 cm | 2011

prana
THE LIFE WITHIN

NOBINA GUPTA

October 20 - December 3, 2011

GALERIE KASHYA HILDEBRAND

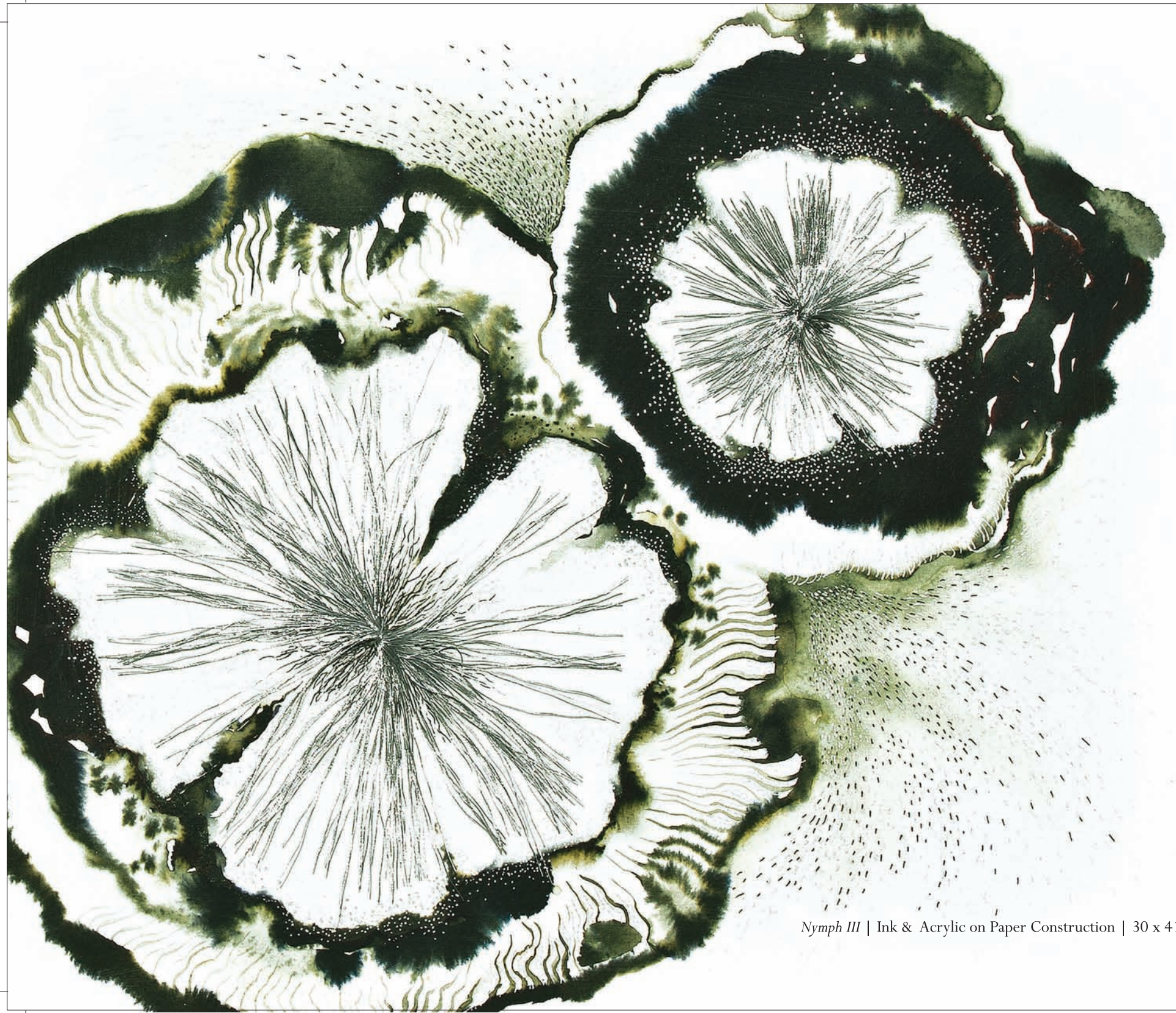


Nymph II | Ink & Acrylic on Paper Construction | 30 x 41 cm | 2010

The whirl of life in modern cities is so often driven by the hurried pursuit of individualistic desires. But the focus of these desires - the unquenchable thirst for acquisitions seem to lead to a state of agitated loneliness, of emptiness. Nobina's work embraces the energy of transformation but reminds us that this energy has its own momentum. When one views the work of Nobina, then, there is a redirection of desire: one wishes not to gratify the self but to sink into her work, to dive into her infinite oceans of imagery, to float in her immersive environments, contemplating the essences of life. As she explains, "I have been seeking to understand this life spirit - the flow of energy which pervades the whole animate and inanimate, organic and inorganic world. I want to focus on the prana, or the life spirit that unites and connects every element in this universe." Through microscopic visions of details, Nobina focuses on macroscopic concepts of life, the environment and the life energy that drives life and the physical universe as a whole. On the one hand, her work allows us to tap into this energy system and interdependence; while on the other hand, these connections encourage us to constantly reconsider how we can become more aware of the movements of prana.

Spiritual Tranquility (Detail) | Pencil, Pen & Ink on Paper | 147 x 64 cm | 2009





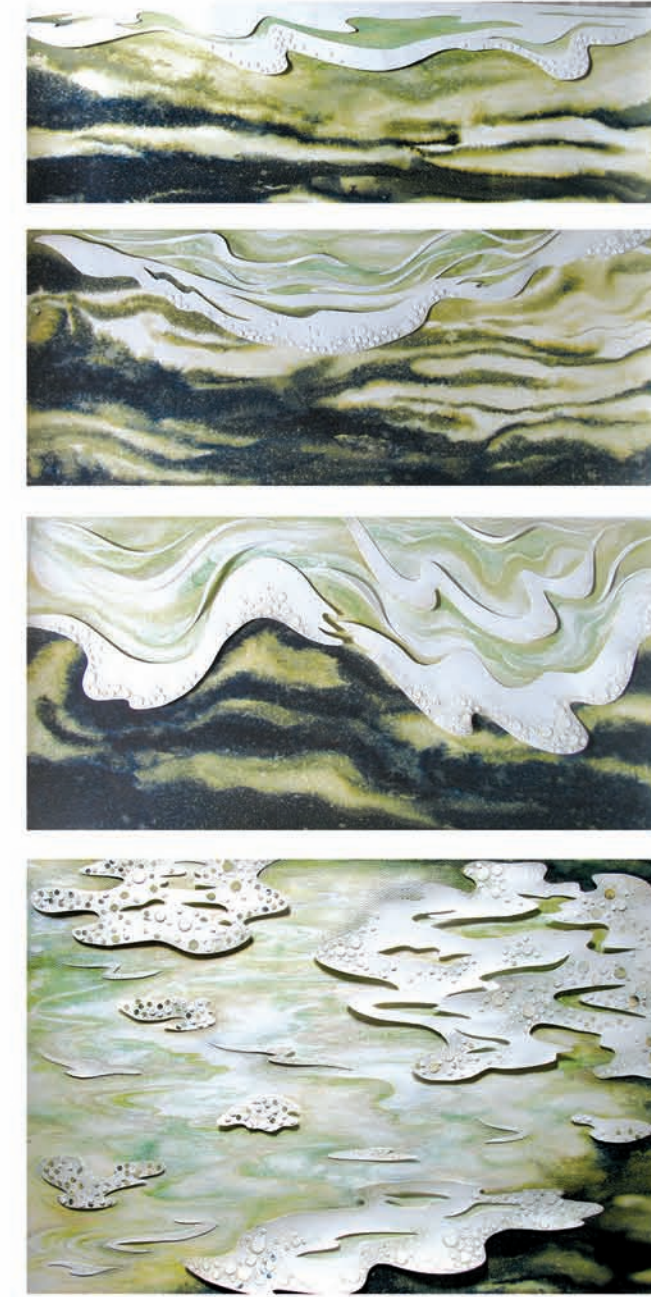
Nymph III | Ink & Acrylic on Paper Construction | 30 x 41 cm | 2010



Illusive Emergence | Ink on Paper | 140 x 107 cm | 2010



Arboreal Assault | Pencil & Ink on Archival Print | 66 x 22 cm (Triptych) | 2010



Inchoative Cataclysm | Ink on Paper Construction | 136 x 70 cm | 2010



Lust for Life | Ink on Paper | 183 x 74 cm | 2009



Permeable Talisman | Ink on Paper | 213 x 76 cm | 2009

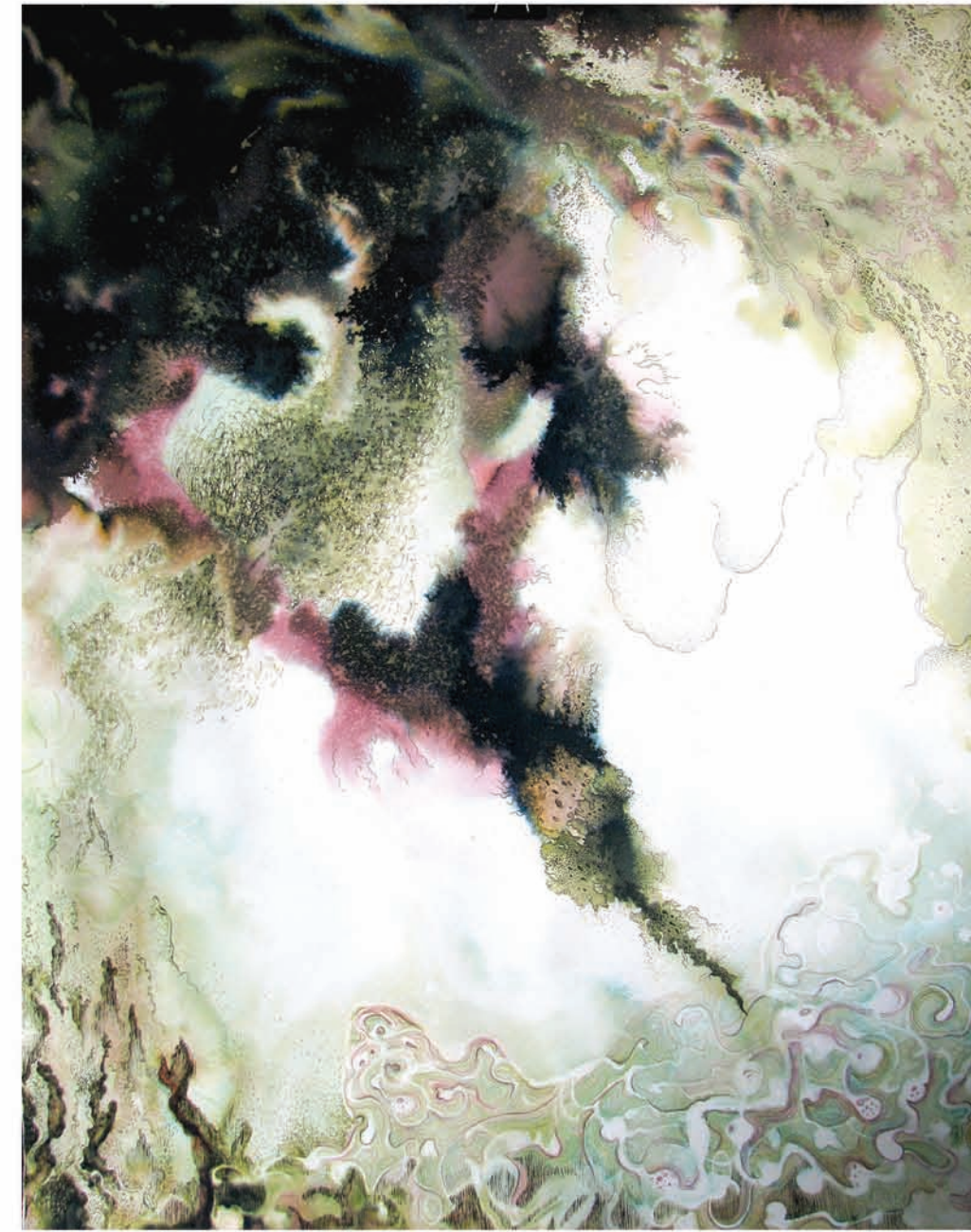
Nobina's practice has been influenced by Indian Aesthetics in combination with Taoism and Zen Buddhism. The development of form, space, color and composition in her work are all informed by these perspectives. She challenges herself to create works without any formal references, refusing to allow viewers to anchor the elements of a work to a particular object. As she clarifies, "this exhibition aims to activate a process of separating oneself from one's consciousness and uniting with the inner self, the prana." As such, her images are not easily perceived as static objects; rather, their indeterminacy foregrounds the energy (prana) of line and color. Nobina takes this initial experiment one step further: she explores the immanence of prana, of life energy in all things and hopes the viewer "find[s] a spiritual resonance of life and nature portrayed in these works."



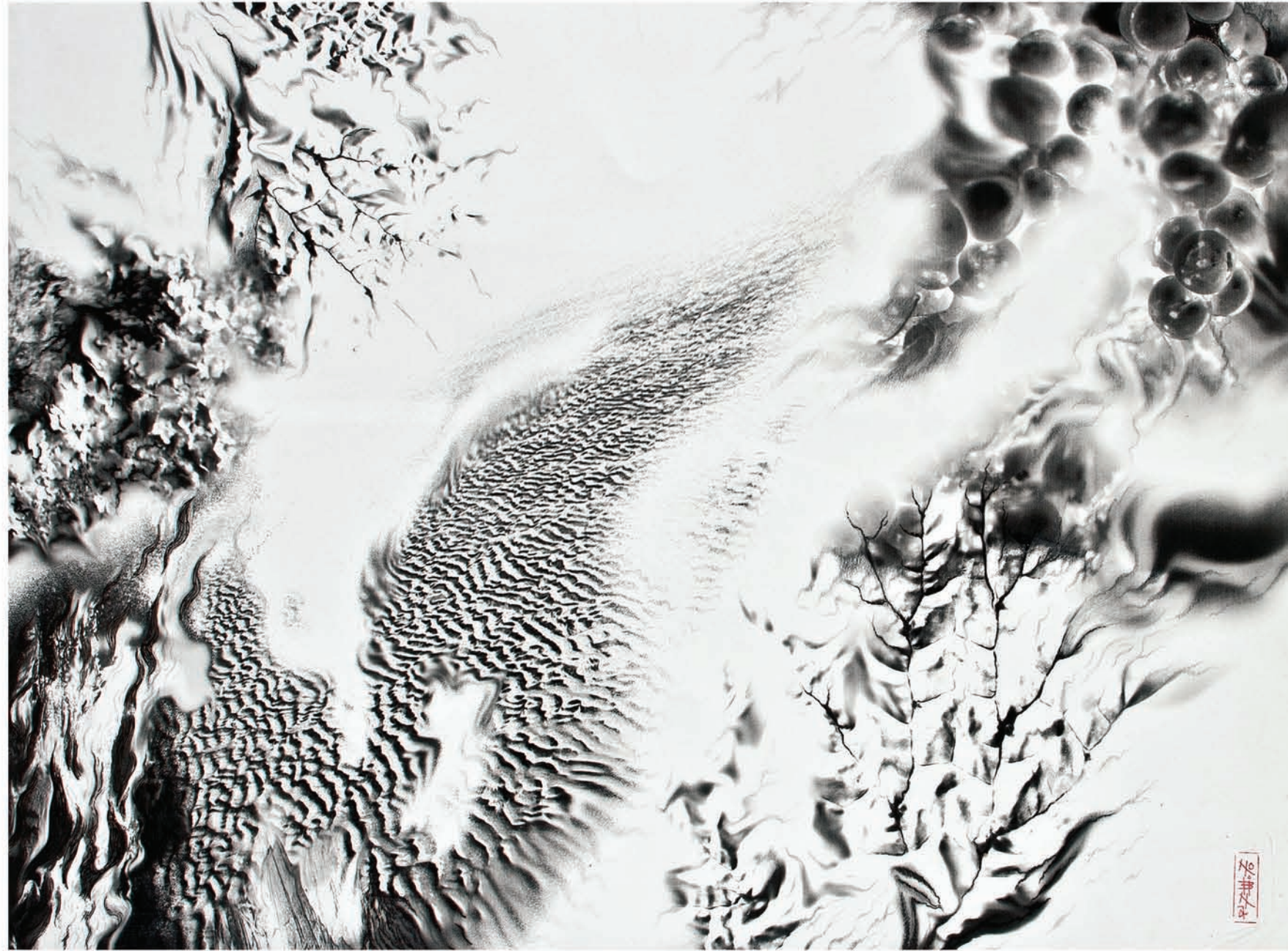
Permeable Talisman (Detail)



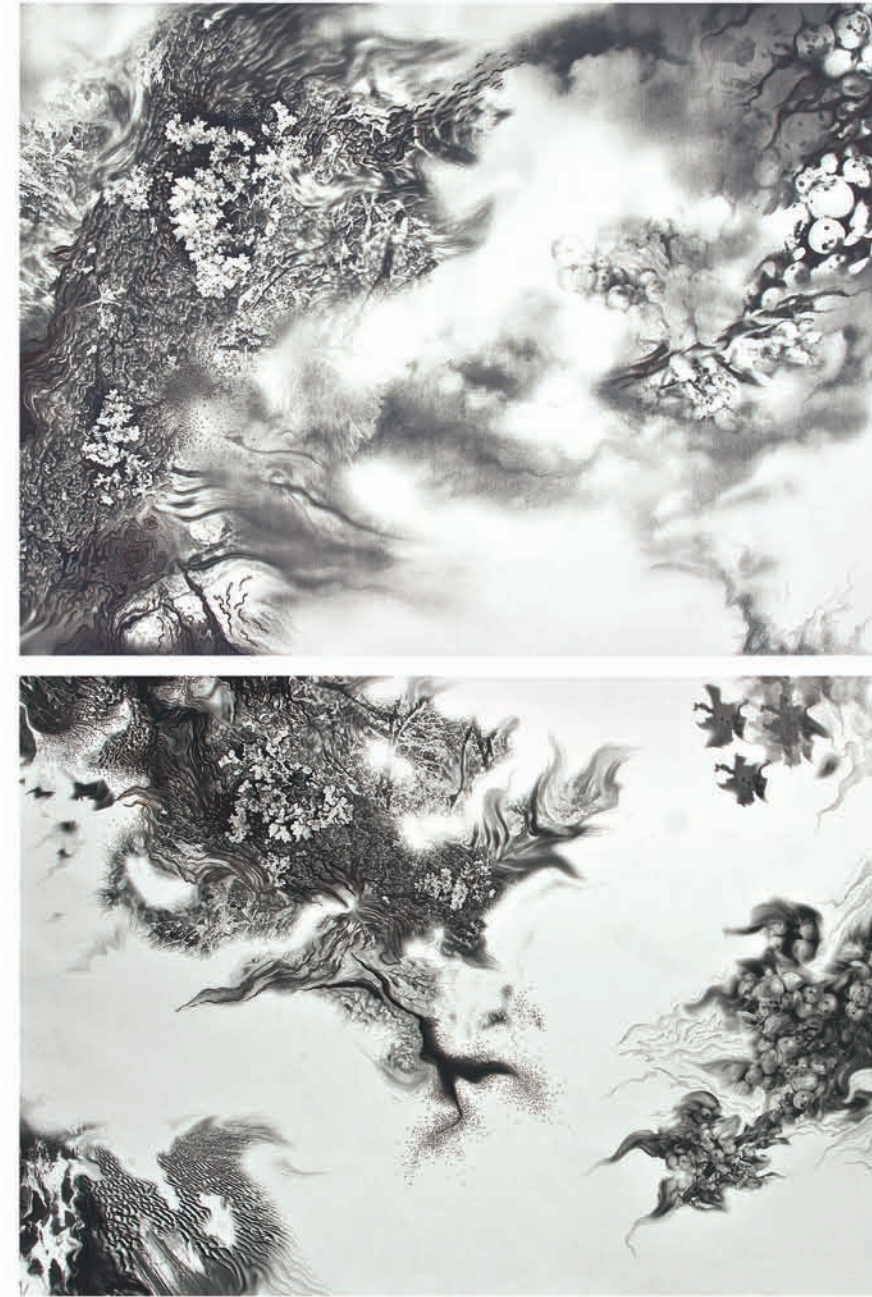
Invigorating | Pen & Ink on Paper | 122 x 99 cm | 2010



Mystical Diffusion | Pen & Ink on Paper | 122 x 99 cm | 2009



Drifting Incipience | Ink on Archival Print | 53 x 71 cm | 2010



Arboreal Diminution | Pencil & Ink on Archival Print | 53 x 72 cm each (Diptych) | 2010



Dubious Concurrence I | Ink on Paper Construction | 25 x 25 cm | 2011

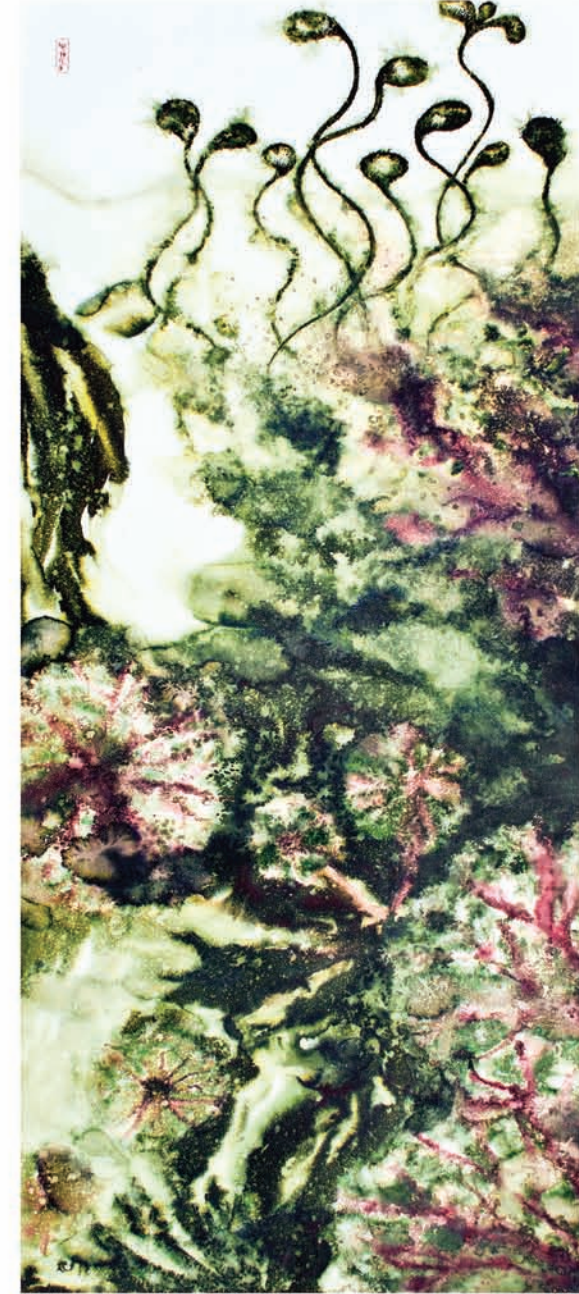
Nobina's works facilitate a viewing experience whereby the viewer, in the absence of easy interpretations, is drawn into the energy expressed through form. Her desire is to create a visual language that communicates the presence of prana both within and without the viewer. The visual and evocative impact of Nobina's work remains pregnant with references to the physical world. Her work elicits the same kind of disorienting effects as looking through a microscope, where the world is both strangely unfamiliar and startlingly familiar. In this uncertain space, her works, which can look both like a cell dividing or a sun exploding, unite the micro- and the macro-cosmos; what links them is the energy patterns that move through life on all levels – prana. It is this common underlying difference and the device of misrecognition that enables seeing one thing as another. In this way, her works emphasize a constant transformative evolution and are asking for the strata to be peeled and probed.

Unfathomable Emancipation (Detail) | Pen & Ink on Paper | 147 x 64 cm | 2010





Mesmerizing Stimulus | Ink on Paper | 91 x 69 cm | 2009



Unfathomable Emancipation | Ink on Paper | 147 x 64 cm | 2010



Constellation of Anomalies | Ink on Paper | 152 x 71 cm | 2010



Igneous Flux | Ink on Paper | 56 x 76 cm | 2010



Pristine Relinquishment (Detail)

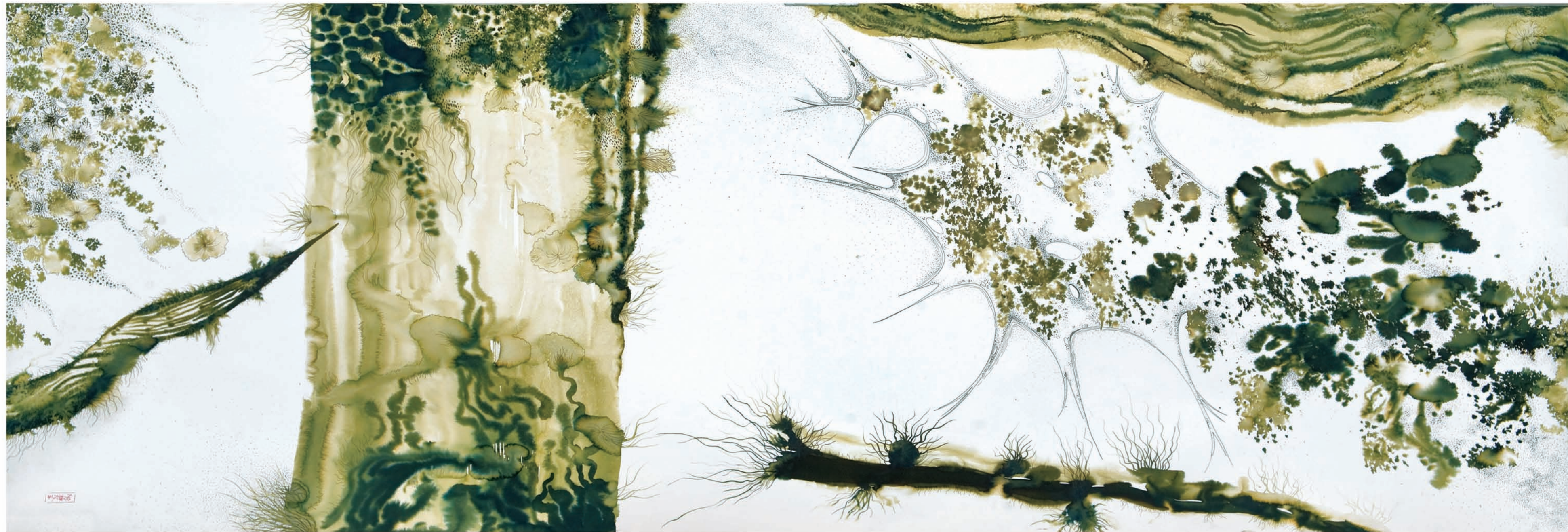
Nobina offers much insight -- intuitively, sensuously as well as analytically -- into the connection between nature, ecology, the body and reproductive capabilities. In a work such as *Unfathomable Emancipation*, the central form could suggest an erupting volcano or a meteor shower; at the same time, it could also reference the process of human fertilization. Either way, the image expresses the same kind of vitality and energy. In another work, *Intangible Dilemma*, one isn't sure if the imagery is suggesting a pond with lily pads or internal organs or something unknown. This processes of discovering, of recognizing and traveling along the sensuous surface of materials creates the sensation that things are and must be in flux - and that all things are united in that flux.



Pristine Relinquishment | Ink on paper | 152 x 69 cm | 2010



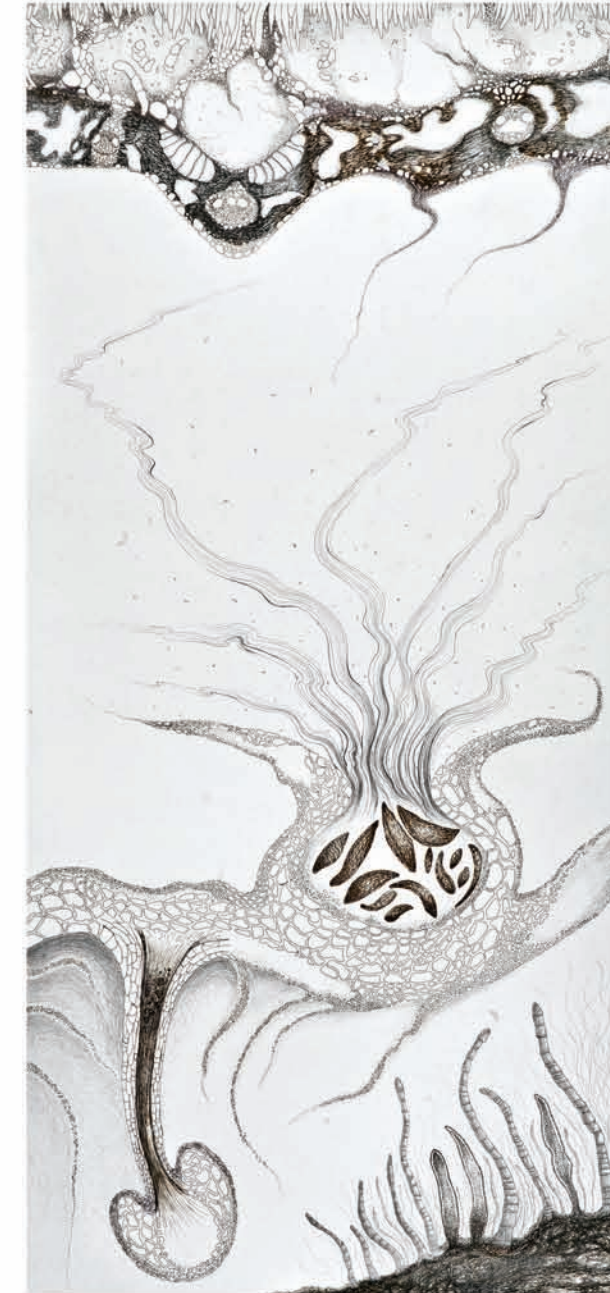
Emancipation | Pen & Ink on paper | 183 x 74 cm | 2009



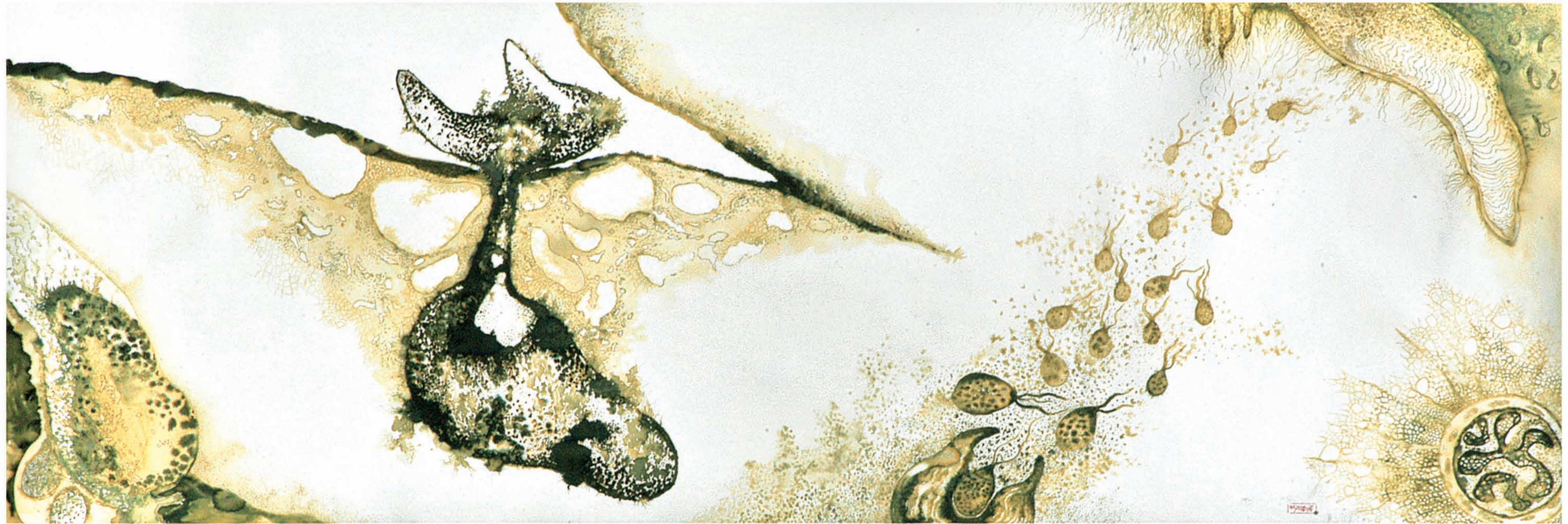
Intangible Dilemma | Pen & Ink on Paper | 76 x 213 cm | 2010



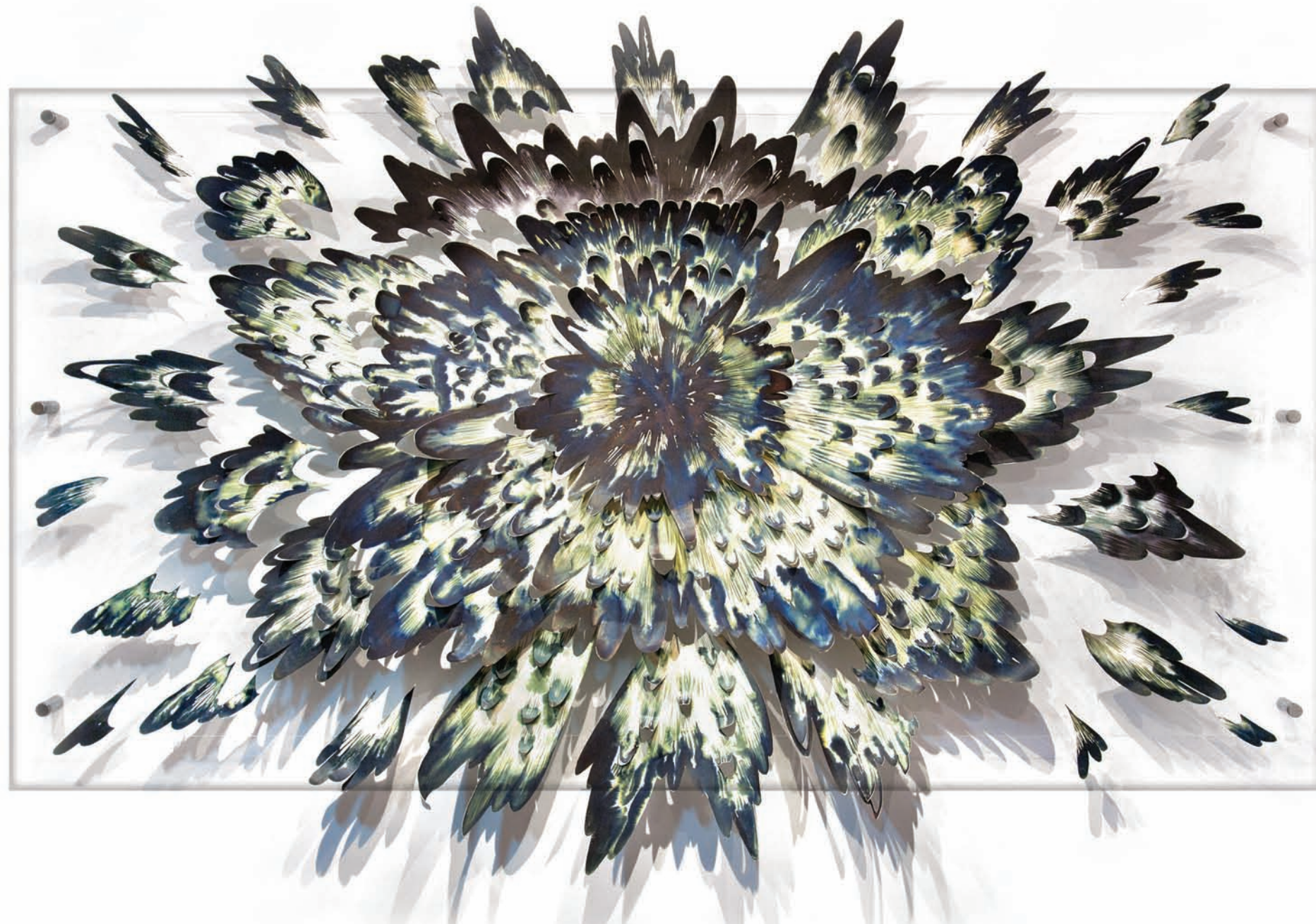
Spiritual Tranquility (Detail)



Spiritual Tranquility | Pencil, Pen & Ink on Paper | 147 x 64 cm | 2009



Nourishing Empathy | Ink on paper | 66 x 208 cm | 2009



Vivacious Exuberance | Mixed Media Installation | 112 x 244 cm | 2011

This sense of flux more fully represents itself through Nobina's installation practices, where the art breaks out of the frame and travels along the wall, unhindered by traditional boundaries or the picture plane. Her combination of imagery and media in transformation creates a body of meaning, both literally and figuratively, through a tactile expressiveness to be witnessed by the whole body of the viewer within the installation. In constructing a cocooned gallery environment for her show, Nobina mediates the potential for a dynamic reconfiguration of the role of sensation in meaning creation; her desire is to put the viewer in touch with prana, the energy flowing within that connects with the energy of the universe. In seeking prana, Nobina's work creates an embodied encounter that embraces the vitality of contemporary life but metaphorically encourages visceral and physical (re)connections beyond the individual self.



Nymph I | Ink & Acrylic on Paper | 30 x 41 cm | 2010



Catharsis | Ink on Paper Pulp Wall Installation | wall size | 2011



B O R N I N 1 9 7 2 I N J A B A L P U R , I N D I A • L I V E S A N D W O R K S I N K O L K A T A , I N D I A

EDUCATION

- 2004 NET Scholar, University Grants Commission. Post Graduate research funded by the Government of India
- 1995 M.F.A., Kala Bhavana, Institute of Fine Arts, Visva Bharati University, Santiniketan, India
- 1993 B.F.A., Kala Bhavana, Institute of Fine Arts, Visva Bharati University, Santiniketan, India

SELECTED SOLO EXHIBITIONS

- 2011 *Beneath the Surface*, Gallery Sanskriti, Kolkata, India
- Prana-The Life Within*, Galerie Kashya Hildebrand, Zurich, Switzerland

SELECTED GROUP EXHIBITIONS

- 2010 *Go See India*, Indo-Sweden Cultural Exchange Program, Gothenburg, Sweden
- No Content Worries*, Aakriti Art Gallery, Kolkata, India
- India International Artists*, Jakarta, Indonesia
- Summer Show*, Centre of International Modern Art, Kolkata, India

- 2009 *Beyond Convention*, Anant Art Gallery, Kolkata, India
- 2008 *The Art of Santiniketan-Masters and Emerging Artists-II*, Nehru Centre, London, UK
- 18 Years*, Annual exhibition at Gallery Sanskriti, Kolkata, India
- The Art of Santiniketan-Masters and Emerging Artists-I*, The Royal College of Art, Henry Moore Gallery, London, UK
- Entourage de color*, Birla Academy of Art & Culture, Kolkata, India
- 2007 *Gen-Next II*, Aakriti Art Gallery, Kolkata, India
- 2006 *Gen-Next I*, the Anniversary show, Aakriti Art Gallery, Kolkata, India
- 1998 *Palash*, Lalit Kala Academy, New Delhi, India
- 1995 *Exploration*, Centre of International Modern Art, Kolkata, India
- Inaugural Show*, Birla Academy of Art and Culture, Mumbai, India
- Birla Annual Exhibition*, Birla Academy of Art and Culture, Kolkata, India
- 1994 *Juveniles*, Birla Academy of Art & Culture, Kolkata, India

AWARDS - 68th All India Annual Exhibition, I.F.A.C.S, New Delhi, India • Swarnanjali Exhibition by World Gold Council, Mumbai, India

PARTICIPATION - India Art Summit 2011 with Gallery Sanskriti, New Delhi, India • Japanese Paper Making under Nobue Nakama at Weavers Studio, Kolkata, India • Environmental Leadership and Conservation Workshop at British Council, Kolkata, India • Signature Art Fest 2008, Kolkata, India • Art Fair India 2007, New Delhi, India • Art Camp for Tsunami Victims, Kolkata, India

Text | Jolaine Frizzell | Zurich | Switzerland
 Photographs | Goutam Mukherjee & Sandip Gupta | Kolkata | India
 Design | S&R | Kolkata | India
 Printing | Liba Graphics | Kolkata | India

